

1

♠ 8643
♥ K1074
♦ 104
♣ K76

♠ QJ
♥ AJ3
♦ Q95
♣ QJ842

♠ K2
♥ Q9652
♦ J73
♣ A103

♠ A10975
♥ 8
♦ AK862
♣ 95

Diagram: A 4x4 grid with N, S, E, W directions. A circled 'N' is in the top-right cell.

Board (1)

Contract	N-S	E-W	MP	Tie
4S	S 4	420	18	3
4Hx	E-2	300	15.5	2
3S	S 4	170	12.5	3
2S	S 4	170	12.5	1
3S	S 3	140	8	4
2S	S 3	140	8	1
2S	S 2	110	5	1
4H	E-2	100	3.5	1
3C	W-2	100	3.5	1
3H	E-1	50	2	1
4S	S-1	50	0.5	1
3S	S-1	50	0.5	1

2

♠ Q9
♥ 762
♦ Q987
♣ A962

♠ A86
♥ A
♦ A64
♣ KQJ754

♠ 1075
♥ KQ10943
♦ K2
♣ 103

♠ KJ432
♥ J85
♦ J1053
♣ 8

Diagram: A 4x4 grid with N, S, E, W directions. A circled 'E' is in the top-right cell.

Board (2)

Contract	N-S	E-W	MP	Tie
3C	W 6	170	19	1
4H	E 4	420	18	1
4H	E 5	450	12	11
4H	E 6	480	5.5	2
3NT	W 6	490	2	5

3

♠ J109
♥ Q1076
♦ A862
♣ J2

♠ K54
♥ 8
♦ KJ54
♣ KQ984

♠ 87632
♥ AJ92
♦ 1073
♣ 10

♠ AQ
♥ K543
♦ Q9
♣ A7653

Diagram: A 4x4 grid with N, S, E, W directions. A circled 'S' is in the bottom-right cell.

Board (3)

Contract	N-S	E-W	MP	Tie
2H	S 2	110	19	1
1NT	S 1	90	18	1
3H	S-1	50	13	3
3H	N-1	50	13	1
2NT	S-1	50	13	1
2H	S-1	50	13	1
1NT	S-1	50	13	3
3H	S-2	100	6	3
3H	N-2	100	6	1
2NT	S-2	100	6	1
4H	N-3	150	2	1
3H	S-3	150	2	2
4H	S-4	200	0	1

4

♠ A4
♥ KQ1098
♦ A
♣ Q10652

♠ J873
♥ J72
♦ QJ2
♣ K73

♠ KQ5
♥ 6
♦ 109853
♣ J984

♠ 10962
♥ A543
♦ K764
♣ A

Diagram: A 4x4 grid with N, S, E, W directions. A circled 'W' is in the top-left cell.

Board (4)

Contract	N-S	E-W	MP	Tie
7H	N 7	2210	19	1
6H	S 7	1460	15	1
6H	N 7	1460	15	6
4H	N 7	710	10	3
4H	N 6	680	5	7
4H	N 5	650	1	1
4H	N 4	620	0	1

5

♠ Q9
♥ Q1065
♦ Q63
♣ KQJ5

♠ 10854
♥ K982
♦ J1098
♣ 10

♠ KJ72
♥ AJ43
♦ K
♣ 7432

♠ A63
♥ 7
♦ A7542
♣ A986

Diagram: A 4x4 grid with N, S, E, W directions. A circled 'N' is in the top-right cell.

Board (5)

Contract	N-S	E-W	MP	Tie
2NT	N 2	120	17.5	3
1NT	N 2	120	17.5	1
2H	E-2	100	15	1
4D	S-1	100	10.5	1
3NT	N-1	100	10.5	4
3C	N-1	100	10.5	1
2NT	S-1	100	10.5	2
3H	W 3	140	6	1
3NT	N-2	200	4	1
3C	S-2	200	4	1
2NT	S-2	200	4	1
5C	N-3	300	1	1
3NT	S-3	300	1	1
3NT	N-3	300	1	1

6

♠ Q542
♥ J2
♦ J63
♣ K1065

♠ J98
♥ Q1098
♦ A1095
♣ A7

♠ A7
♥ 763
♦ K872
♣ J432

♠ K1063
♥ AK54
♦ Q4
♣ Q98

Diagram: A 4x4 grid with N, S, E, W directions. A circled 'E' is in the top-right cell.

Board (6)

Contract	N-S	E-W	MP	Tie
2S	N 3	140	18.5	2
2S	N 2	110	15	5
1NT	S 1	90	12	1
3S	N-1	50	6.5	2
2S	N-1	50	6.5	8
2D	E 2	90	1	1
3D	E 3	110	0	1

7

♠ 863
♥ K73
♦ A1076
♣ AJ4

♠ KQ
♥ QJ1084
♦ KJ5
♣ K86

♠ 7
♥ 9652
♦ Q98432
♣ 93

♠ AJ109542
♥ A
♦
♣ Q10752

Board (7)

Contract	N-S	E-W	MP	Tie
6S	S 6	1430	18	3
5Sx	S 6	1050	15.5	2
5S	S 6	680	7	3
5S	N 6	680	7	1
4S	S 6	680	7	11

8

♠ AKQ9743
♥ K84
♦
♣ A42

♠ 8
♥ 76
♦ KQ763
♣ KQ1083

♠ J652
♥ J2
♦ J109
♣ J975

♠ 10
♥ AQ10953
♦ A8542
♣ 6

Board (8)

Contract	N-S	E-W	MP	Tie
7H	S 7	1510	17.5	3
7H	N 7	1510	17.5	1
6H	S 7	1010	14	2
6H	N 7	1010	14	1
6S	N 6	980	10	5
4S	N 6	480	5	4
4H	S 6	480	5	1
6S	S-1	50	1.5	1
6H	S-1	50	1.5	1
7S	S-2	100	0	1

9

♠ 74
♥ AKJ832
♦ K7
♣ AJ7

♠ 9
♥ 1097
♦ AQ543
♣ K942

♠ AKQJ10862
♥ 4
♦ J1092
♣

♠ 53
♥ Q65
♦ 86
♣ Q108653

Board (9)

Contract	N-S	E-W	MP	Tie
5Hx	N-1	100	19	1
3S	E 5	200	18	1
5Hx	N-2	300	17	1
5S	E 5	650	10.5	2
4S	E 5	650	10.5	10
4S	E 6	680	4	1
4Sx	E 5	990	1.5	4

10

♠ K642
♥ J87
♦ J64
♣ Q104

♠ J75
♥ AK9542
♦ 109
♣ K5

♠ Q108
♥ Q10
♦ 7532
♣ A976

♠ A93
♥ 63
♦ AKQ8
♣ J832

Board (10)

Contract	N-S	E-W	MP	Tie
1S	S 2	110	19	1
2D	S 2	90	17.5	1
2C	S 2	90	17.5	1
1NT	E 1	90	16	1
3D	S-1	100	14	1
2D	S-1	100	14	2
3H	W 3	140	7.5	1
2H	W 3	140	7.5	9
3S	N-2	200	1	1
3D	S-2	200	1	1
2D	S-2	200	1	1

11

♠ 64
♥ AK1095
♦ 1097
♣ 742

♠ KJ5
♥ 763
♦ Q65
♣ KQJ6

♠ A1083
♥ Q
♦ AK832
♣ 853

♠ Q972
♥ J842
♦ J4
♣ A109

Board (11)

Contract	N-S	E-W	MP	Tie
4S	W-2	100	18.5	1
3NT	W-2	100	18.5	1
5D	W-1	50	14	1
5D	E-1	50	14	3
3NT	W-1	50	14	3
2Hx	N-1	100	10	1
4C	W 5	150	8.5	1
3D	E 5	150	8.5	1
3S	W 4	170	6.5	2
3Hx	N-2	300	5	1
5D	E 5	400	2	2
5C	W 5	400	2	1
3NT	W 3	400	2	1
3NT	E 3	400	2	1

12

♠ 7
♥ J75
♦ AKQ108632
♣ 10

♠ AQ862
♥ 983
♦ 75
♣ 842

♠ KJ105
♥ AKQ104
♦ 4
♣ K73

♠ 943
♥ 62
♦ J9
♣ AQJ965

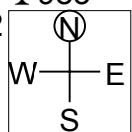
Board (12)

Contract	N-S	E-W	MP	Tie
4S	W-1	50	18	1
4H	E-1	50	18	2
5D	N-1	100	16	1
3S	E 3	140	15	1
5Dx	N-1	200	11	5
3S	W 5	200	11	2
4H	E 4	420	6.5	2
4S	W 5	450	3	4
4S	E 5	450	3	1
5Dx	N-2	500	0	1

13

♠KJ9764
♥32
♦76
♣983

♠A10532
♥A85
♦AKJ
♣A2



♠KJ1094
♥9854
♦KQJ10

♠Q8
♥Q76
♦Q1032
♣7654

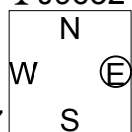
Board (13)

Contract	N-S	E-W	MP	Tie
7H E-2	200		19	1
4H E 6		680	16	5
4NT W 7		720	13	1
6H W 6		1430	8.5	4
6H E 6		1430	8.5	4
6NT W 6		1440	3	2
6NT E 6		1440	3	1
6H W 7		1460	1	1
6NT W 7		1470	0	1

14

♠AK7
♥43
♦AQ7
♣J9632

♠4
♥QJ105
♦KJ10
♣AKQ107



♠Q1095
♥K97
♦86543
♣5

♠J8632
♥A862
♦92
♣84

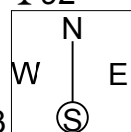
Board (14)

Contract	N-S	E-W	MP	Tie
4Hx W-4	800		19	1
4H W-4	200		18	1
3NT E-3	150		16.5	1
3C W-3	150		16.5	1
2S S 3	140		14	1
2S N 3	140		14	2
2S N 2	110		12	1
2C W-2	100		10.5	2
3D E-1	50		7.5	1
2H W-1	50		7.5	2
1H W-1	50		7.5	1
4S S-1		50	5	1
3Sx S-1		100	3.5	1
2H S-2		100	3.5	1
2H W 2		110	1.5	2
1NT W 4		180	0	1

15

♠QJ7
♥AK1094
♦1042
♣92

♠K63
♥Q6
♦9753
♣KQ43



♠984
♥872
♦KQJ
♣10876

♠A1052
♥J53
♦A86
♣AJ5

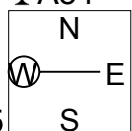
Board (15)

Contract	N-S	E-W	MP	Tie
3NT N 4	630		19	1
4H N 4	620		15.5	6
1NT S 4	180		10	2
1NT N 4	180		10	3
3H N 4	170		4.5	1
2H N 4	170		4.5	5
1NT S 3	150		0.5	1
1NT N 3	150		0.5	1

16

♠108632
♥AK109
♦A
♣A84

♠J754
♥
♦K73
♣QJ10765



♠Q6542
♥J982
♦K932

♠AKQ9
♥J873
♦Q10654
♣

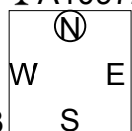
Board (16)

Contract	N-S	E-W	MP	Tie
6S N 6	980		17.5	4
4S N 6	480		15	1
4S N 4	420		12.5	4
6S N-1		50	8.5	4
7S N-2		100	3.5	1
6S N-2		100	3.5	3
6H N-2		100	3.5	1
5H N-2		100	3.5	1
6H N-3		150	0	1

17

♠J
♥Q106
♦QJ86
♣A10972

♠A9765
♥K93
♦
♣Q8653



♠KQ108
♥A8742
♦753
♣K

♠432
♥J5
♦AK10942
♣J4

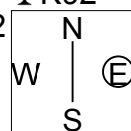
Board (17)

Contract	N-S	E-W	MP	Tie
3DxxE-6	2800		19	1
4Dx S 4	510		18	1
5H E-2	100		17	1
4S W-1	50		16	1
5D S-1		50	15	1
5Dx S-1		100	13.5	1
5D S-2		100	13.5	1
3H E 4		170	11.5	2
6Dx S-2		300	10	1
5S W 5		450	5	1
5H E 5		450	5	1
4S W 5		450	5	3
4S E 5		450	5	2
4H E 5		450	5	2
5S E 6		480	0	1

18

♠J
♥AK1097
♦J863
♣K92

♠A97532
♥
♦97
♣AQJ84



♠Q104
♥J842
♦A42
♣1053

♠K86
♥Q653
♦KQ105
♣76

Board (18)

Contract	N-S	E-W	MP	Tie
3S W 4		170	17.5	4
4S W 4		420	9	13
4Sx W 4		590	1.5	2
4Sx W 5		690	0	1

19

♠73
♥K1085
♦AK42
♣732

♠Q82
♥AQ4
♦J65
♣A1085

N			
W	—	E	
	(S)		

♠AJ54
♥96
♦1097
♣QJ94

♠K1096
♥J732
♦Q83
♣K6

Board (19)

Contract	N-S	E-W	MP	Tie
2S	E-2	200	19	1
2H	S 2	110	17.5	2
3C	W-1	100	13	3
2S	E-1	100	13	1
1NT	W-1	100	13	3
3D	S-1	50	9	1
1NT	W 1	90	7	3
3C	W 3	110	5	1
1NT	W 2	120	2	5

20

♠Q65
♥A
♦K875
♣A9543

♠A10
♥109765
♦AJ6
♣K76

N			
W	—	E	
	(S)		

♠KJ872
♥43
♦Q102
♣Q82

♠943
♥KQJ82
♦943
♣J10

Board (20)

Contract	N-S	E-W	MP	Tie
2H	W-2	200	19	1
2H	W-1	100	16.5	3
1NT	W-1	100	16.5	1
1NT	W 1	90	14	1
2C	N-1	100	13	1
2S	E 2	110	11.5	2
2NT	E 3	150	6.5	1
1NT	W 3	150	6.5	7
1NT	S-2	200	2	1
2NT	N-4	400	1	1
2Cx	N-2	500	0	1

21

♠103
♥J93
♦J8
♣KQ8765

♠K5
♥KQ10542
♦1072
♣AJ

N			
W	—	E	
	(S)		

♠QJ964
♥76
♦AK54
♣94

♠A872
♥A8
♦Q963
♣1032

Board (21)

Contract	N-S	E-W	MP	Tie
4S	E-3	150	19	1
4H	W-2	100	17.5	1
3H	W-2	100	17.5	1
4H	W-1	50	12	6
3S	E-1	50	12	2
3H	W-1	50	12	1
2H	W 2	110	7	1
3H	W 3	140	5	1
2H	W 3	140	5	2
2H	W 4	170	2	3
3NT	E 4	430	0	1

22

♠AK4
♥A62
♦QJ9
♣KJ52

♠Q97
♥974
♦653
♣Q1087

N			
W	—	E	
	(S)		

♠J86532
♥KJ1083
♦
♣93

♠10
♥Q5
♦AK108742
♣A64

Board (22)

Contract	N-S	E-W	MP	Tie
7NT	N 7	1520	19	1
7D	S 7	1440	18	1
6NT	S 7	1020	14.5	1
6NT	N 7	1020	14.5	5
6NT	N 6	990	10.5	2
6D	S 7	940	7	5
6D	S 6	920	3	2
6C	N 6	920	3	1
3NT	N 5	460	1	1
7D	S-1	50	0	1

23

♠K64
♥Q92
♦J10973
♣95

♠A1032
♥8743
♦82
♣Q43

N			
W	—	E	
	(S)		

♠QJ98
♥5
♦AK54
♣J1087

♠75
♥AKJ106
♦Q6
♣AK62

Board (23)

Contract	N-S	E-W	MP	Tie
4H	S 4	620	18.5	2
3S	W-2	200	17	1
3H	S 4	170	14.5	4
3H	S 3	140	10.5	3
2H	S 3	140	10.5	1
3S	W-1	100	7	3
4H	S-1	100	3.5	2
3NT	N-1	100	3.5	1
3H	S-1	100	3.5	1
2S	W 2	110	1	1
3Hx	S-1	200	0	1

24

♠95
♥AJ62
♦J63
♣AK76

♠AQ10
♥95
♦Q985
♣J942

N			
W	—	E	
	(S)		

♠J742
♥KQ7
♦10742
♣85

♠K863
♥10843
♦AK
♣Q103

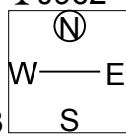
Board (24)

Contract	N-S	E-W	MP	Tie
3H	S 3	140	19	1
4H	S-1	50	10	14
4H	N-1	50	10	1
3NT	S-1	50	10	2
4H	S-2	100	0.5	2

25

♠KQ872
♥J32
♦10
♣J962

♠954
♥107
♦Q72
♣AK873



♠AJ
♥AQ86
♦AK9853
♣5

♠1063
♥K954
♦J64
♣Q104

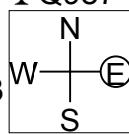
Board (25)

Contract	N-S	E-W	MP	Tie
6D E-2	200		19	1
6D E-1	100		16	3
5D E-1	100		16	1
3NT W-1	100		16	1
5D E 5		600	12	3
3NT W 4		630	8.5	3
3NT E 4		630	8.5	1
3NT W 5		660	4.5	4
3NT W 6		690	1	3

26

♠AK8
♥K108
♦KJ5
♣Q987

♠J652
♥A42
♦A1073
♣A3



♠1073
♥J97
♦Q964
♣J105

♠Q94
♥Q653
♦82
♣K642

Board (26)

Contract	N-S	E-W	MP	Tie
2Dx W-1	200		19	1
1NT N 2	120		14.5	8
2D W-1	100		10	1
1NT N 1	90		8	3
1NT W 1		90	6	1
1NT N-1		100	3	5
1NT W 2		120	0	1